

GemSAFE Version 3

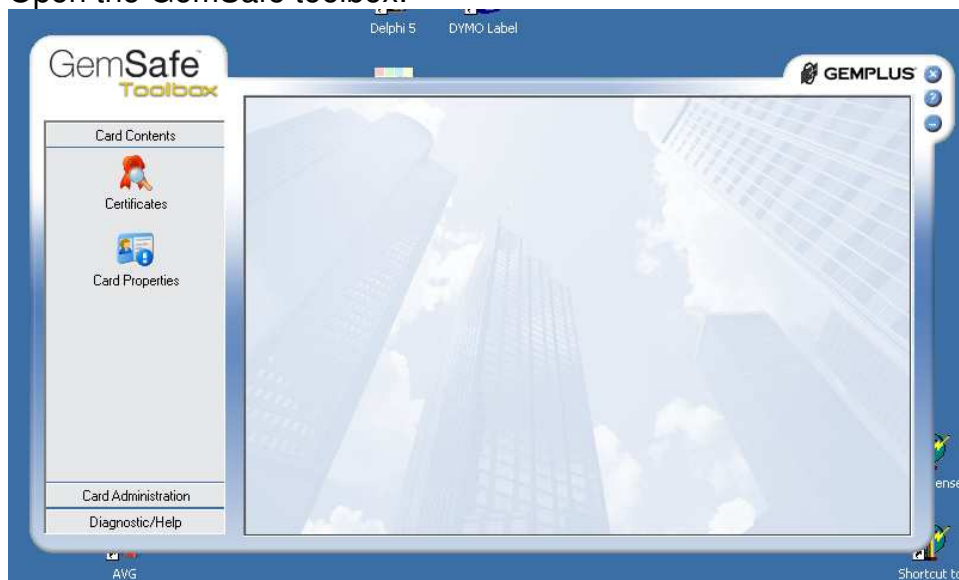
This document describes the use of the GemSAFE version 3 signing software.

Previous versions of GemSAFE used the Card Details Tools to manage and register smart card certificates. This has been replaced by the GemSAFE Toolbox in Version 3. You do not need to uninstall the previous version, the new version will install over it.

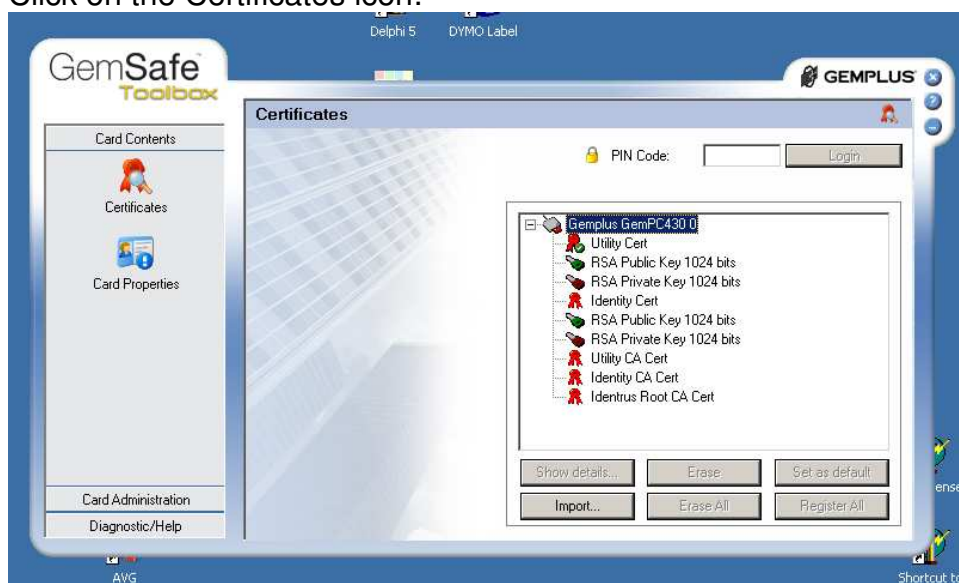
After installation of GemSAFE Version 3 from the CD issued by your Bank, the GemSAFE Toolbox (GSToolBox.exe) can normally be found in the folder:
C:\Program Files\Gemplus\Common\GemSAFE Toolbox\

Procedure to register smart card certificates.

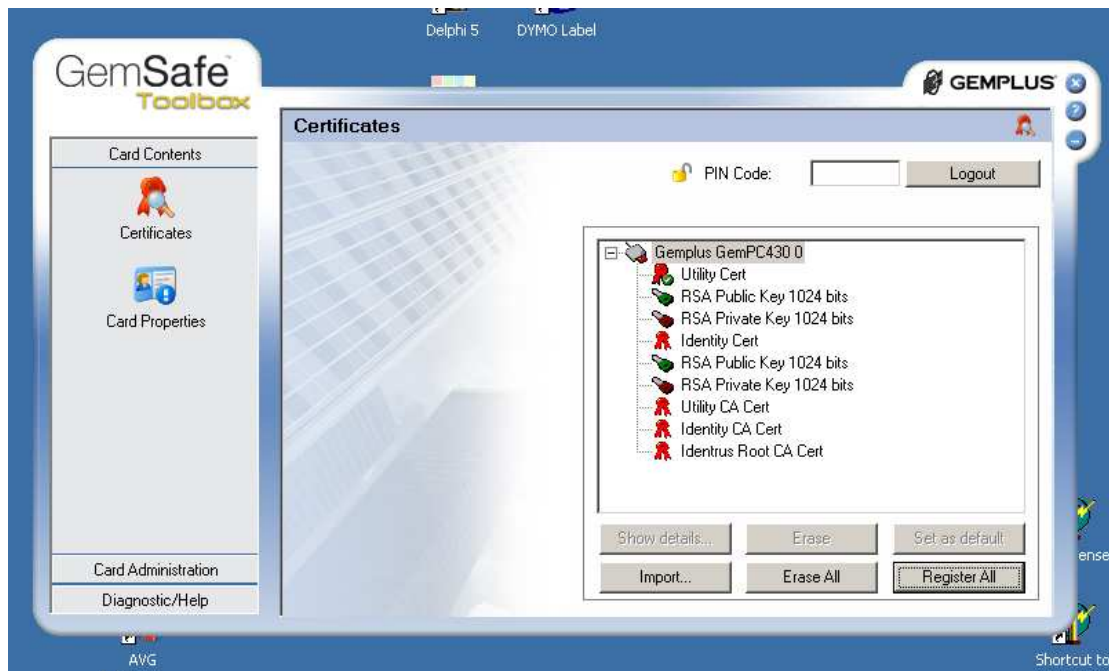
Ensure that your smart card is in the card reader.
Open the GemSAFE toolbox:



Click on the Certificates icon:

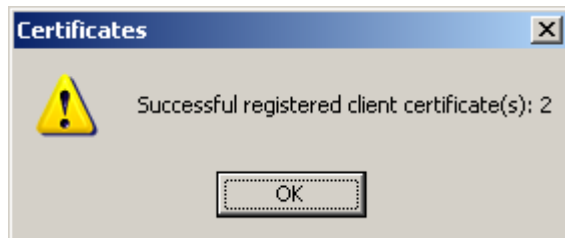


You will see a list of certificates on your smart card.
Enter your PIN code and Login.



Click on the Register All button

The Certificates successful window should appear, showing the number of client certificates registered (normally 1 or 2):



Hit OK then close the GemSafe toolbox with the 'X' icon top right.

The registration process is complete.

You must now register the new client certificate with your Bacstel-iP system.